

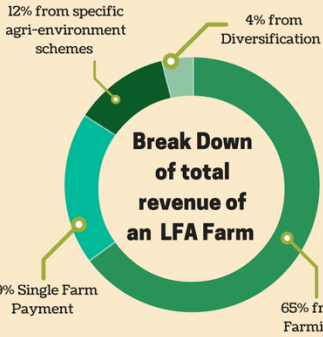
If You want to go fast, Go Alone

If You want to go far, Go Together

THE UPLANDS ALLIANCE

A Network For The Future Of England's Uplands

England's Uplands



12%
Of England is uplands



3
HEN HARRIERS NESTED IN 2016 IN AN UPLAND ENVIRONMENT

There are over **70 million visits** to upland **National Parks** each year

6500+ commercial upland farms
With a 2014 average Net Farm Income of £6,424

4% of upland peat bogs are in good ecological condition



39% of moorland is common land

200million tonnes of carbon are stored in England's uplands

86% of open access land is in the Uplands

Valued Landscapes
75% of uplands are National Parks or AONB

2350ha of limestone pavement in England

56% of upland farms are tenanted compared with **45%** of lowland farms

20% OF FOREST IN ENGLAND IS IN THE UPLANDS

82% of common land is in the uplands

Average LFA Farmer
Is **58**
has 26 beef cows
and 340 breeding ewes

Government payment to upland farmers is less than £3.30 per visit per year

VISITORS TO UPLAND AREAS SPEND
£2 BILLION A YEAR

29% of breeding cows
And **44%** of breeding sheep
Are farmed in the Uplands

1000ha of traditional hay meadow in upland areas; some contain more than **120** plant species

1.5% OF GLOBAL BLANKET BOG IS FOUND IN ENGLISH UPLANDS

5624 Ancient monuments are in in upland areas.
1/3 of Englands total

16% of uplands in England are managed as driven grouse moors

12% of farm businesses contain moorland and SDA land
6% consist purely of SDA and moorland

9% of the money from the BPS goes to upland farmers, that's **£150 million**

96% Of our upland SSSIs are in favourable or recovering condition.

18% of agri-environment money goes to the uplands each year, that is **£81 million**

There are 500km of national trails in National Parks.

28 out of our 38 dragonfly species live in upland bogs

12 Species of birds living in the uplands are now on the red list

Jargon Buster
Uplands here defined as SDA-Severely Disadvantaged Area plus Moorland
LFA-Less Favoured Area
AONB-Area of Outstanding Natural Beauty
BPS-Basic payments scheme
SSSI-Special Site of Scientific Interest

70% of our drinking water comes from the uplands

53% OF OUR SSSI LAND IS IN THE UPLANDS

© Designed for the Uplands Alliance by James Weir 2016

THE UPLANDS ALLIANCE

A Network For The Future Of England's Uplands



Forestry Commission



Newcastle University



UNIVERSITY OF
EXETER



National Trust



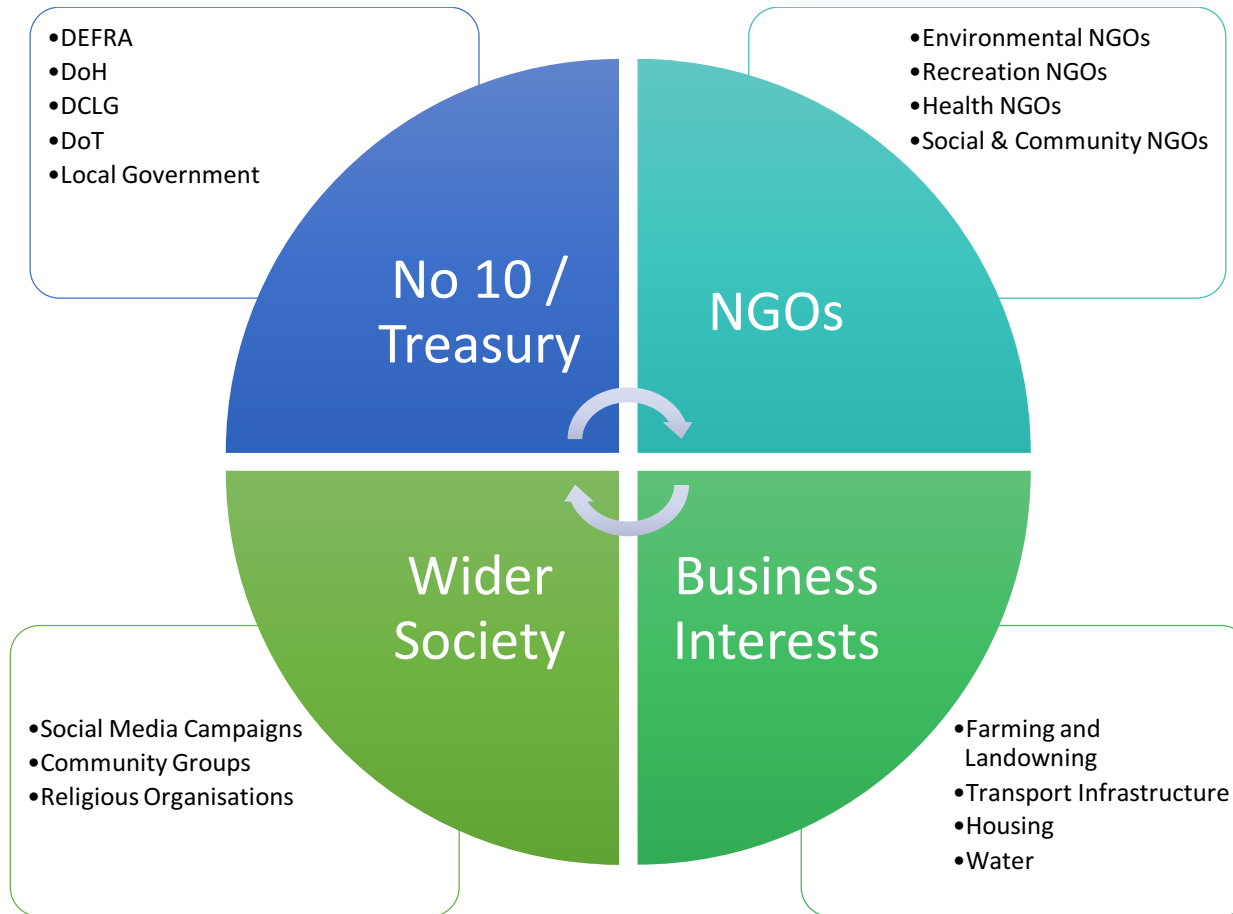
Department
for Environment
Food & Rural Affairs



The Moorland Association

NEWTON RIGG COLLEGE
part of ASKHAM BRYAN COLLEGE

A Large Tent to Shape our Future Policies

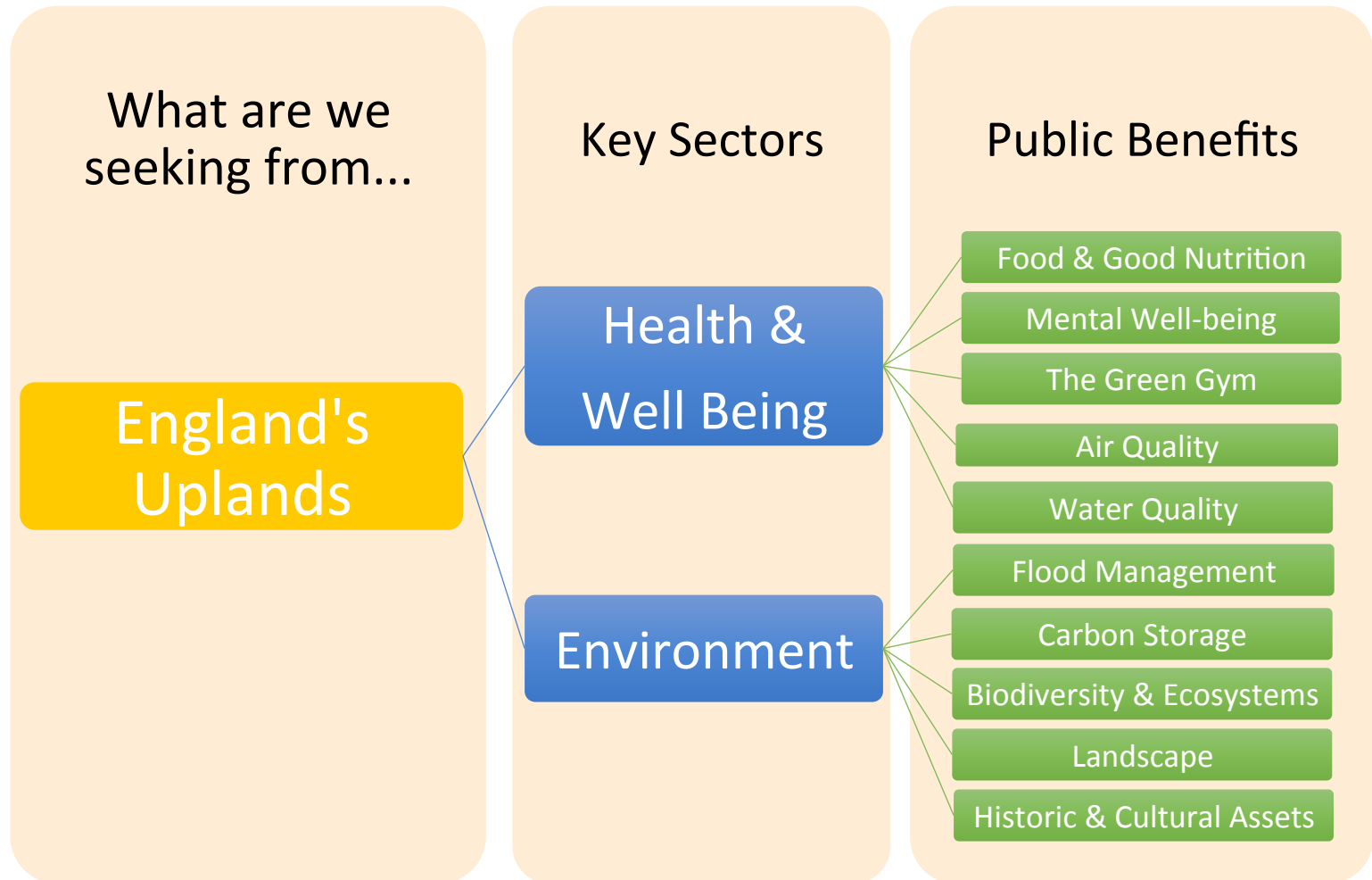


Outcomes from London Workshop

The uplands are of high value for the public benefits they provide society

Public money should be focused on delivering and enhancing these public benefits

Looking Forward: Enabling the Uplands to provide Health, Well-being & Environmental Stewardship



Attributes of Successful Management

Good Communication
Respectful Attitudes
Transparent Administration
Payments Reflect Input
Clarity on Rights
Fair Negotiations
Agreed Outcomes
Established Networks
Leadership
Time
Value Local Knowledge

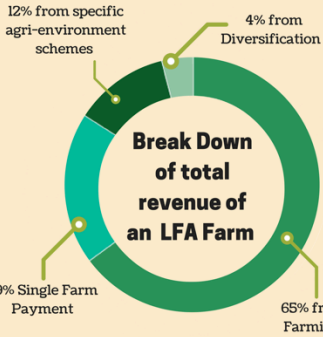
Looking Forward we need to....

find **Common Ground**

Communicate better

Champion the Uplands

England's Uplands



12%
Of England is uplands



3
HEN HARRIERS NESTED IN 2016 IN AN UPLAND ENVIRONMENT

There are over **70 million visits** to upland **National Parks** each year

6500+ commercial upland farms
With a 2014 average Net Farm Income of £6,424



4% of upland peat bogs are in good ecological condition

Valued Landscapes
75% of uplands are National Parks or AONB

39% of moorland is common land



2350ha of limestone pavement in England

200million tonnes of carbon are stored in England's uplands

86% of open access land is in the Uplands

56% of upland farms are tenanted compared with **45%** of lowland farms

20% OF FOREST IN ENGLAND IS IN THE UPLANDS

82% of common land is in the uplands

Average LFA Farmer
Is **58**
has **26** beef cows
and **340** breeding ewes

Government payment to upland farmers is less than **£3.30** per visit per year

VISITORS TO UPLAND AREAS SPEND
£2 BILLION A YEAR

29% of breeding cows
And **44%** of breeding sheep
Are farmed in the Uplands

1000ha of traditional hay meadow in upland areas; some contain more than **120** plant species

1.5% OF GLOBAL BLANKET BOG IS FOUND IN ENGLISH UPLANDS

5624 Ancient monuments are in in upland areas.
1/3 of Englands total

16% of uplands in England are managed as driven grouse moors

12% of farm businesses contain moorland and SDA land
6% consist purely of SDA and moorland



9% of the money from the BPS goes to upland farmers, that's **£150 million**

96% Of our upland SSSIs are in favourable or recovering condition.

18% of agri-environment money goes to the uplands each year, that is **£81 million**

There are 500km of national trails in National Parks.

12 Species of birds living in the uplands are now on the red list

28 out of our 38 dragonfly species live in upland bogs

Jargon Buster
Uplands here defined as SDA-Severely Disadvantaged Area plus Moorland
LFA-Less Favoured Area
AONB-Area of Outstanding Natural Beauty
BPS-Basic payments scheme
SSSI-Special Site of Scientific Interest

70% of our drinking water comes from the uplands

53% OF OUR SSSI LAND IS IN THE UPLANDS